



CENTRE FOR BRITISH PHOTOGRAPHY TOURING EXHIBITIONS



Uncharted Streets: Photographers from the Hyman Collection presents five photographers who were born outside the UK but have been central to the development of photography in Britain over the last century. The title alludes to William Blake's *Songs of Innocence and Experience* and T. S. Elliot's *The Wasteland*. However, it inverts their charter'd streets to suggest the role of those from outside in charting new territories, providing new perspectives and taking British photography in new directions.

The exhibition begins with the pioneering work of Kurt Hutton (b. Germany 1893) and Bill Brandt (b. Germany, 1904). Each photographer played a pivotal role in bringing European ideas into British culture and stimulated British photographic publications such as *Lilliput* and *Picture Post* magazine. It then spotlights the work of Edith Tudor-Hart (b. Vienna, 1908) who used photography as a vehicle for social change. The exhibition also showcases two of the most eminent figures in contemporary British photography: Charlie Phillips (b. Jamaica, 1944) is one of the most celebrated documenters of the African-Caribbean community in London, and Markéta Luskačová (b. Czechoslovakia, 1944), whose work has been so influential to British photography since the early 1970s.

UNCHARTED STREETS

PHOTOGRAPHERS FROM THE HYMAN COLLECTION

WWW.BRITISHPHOTOGRAPHY.ORG



ABOUT US

PHOTOGRAPHERS

The exhibition includes work by Bill Brandt, Kurt Hutton, Marketa Luskacova, Charlie Phillips, and Edith Tudor-Hart.

THE HYMAN COLLECTION

The Hyman Collection is the private collection of Claire and James Hyman. The Hyman Collection supports photographers working in Britain and is one of the most significant collections of British Photography in the world.

The collection began in 1996 and consists of over three thousand artworks with a focus on photography in Britain. The collection ranges from conceptual artists working in photography to documentary photographers, and encompasses historic as well as contemporary photographs. The collection is committed to diversity and to supporting women in photography.

The Centre for British Photography has a loan agreement with the Hyman Collection and administers its loans programme.

CENTRE FOR BRITISH PHOTOGRAPHY

The Centre for British Photography (registered charity number 1190955) was founded by James Hyman in 2020 and seeks to support photographers working in Britain through exhibitions, events, grants and mentoring.

The charity provides a platform for a range of voices in order to present an expansive overview of the diversity of photography, past and present.

SPACE REQUIRED

Full exhibition requires approximately 40 linear metres.

To expand or reduce this exhibition please contact us to discuss shaping it for your venue.

LIST OF WORKS

Please see Appendix A for selected works.

FRAMING

All works are provided framed.

PREVIOUS VENUES

Ben Uri Gallery and Museum, London, 17th January to 8th March 2024

CONTACT

For more details of this exhibition please consult info@britishphotography.org

INTERPRETATION

Included with the exhibition is:

- Text for introduction panel and captions
- Supporting archival material (Picture Post magazine, Lilliput and books about the photographers)
- Artist information folders

Venues to produce own vinyl lettering and labels.

HIRE FEE, TRANSPORT AND INSURANCE

£1,500 fee to the Centre for British Photography for curation and administration

Venues will be responsible for two way transport within mainland UK and for insurance in transit and in situ.



INSTALLATION IMAGES



INSTALLATION IMAGES



LIST OF WORKS



Bill Brandt

Flower Seller, Belsize Park, 1934
Framed Vintage Gelatin Silver Print
22 x 16.8 cms

Nursery in Mayfair, 1934
Framed Vintage Gelatin Silver Print
24.8 x 19.8 cms

Golf in the Rain, 1934
Framed Vintage Gelatin Silver Print
23.4 x 19.6 cms

Harrow Garden Party, 1935
Framed Vintage Gelatin Silver Print
25.5 x 20.4 cms

York Villa, Bath, 1935
Framed Vintage Gelatin Silver Print
19.8 x 23 cms

*A Sikh Family sheltering in an alcove
where coffins once stood, 1940*
Framed Vintage Gelatin Silver Print
23.1 x 19.3 cms

*East End Wine Merchant's Cellar: A
Group of Orthodox Jews reading their
Bibles, 1940*
Framed Vintage Gelatin Silver Print
24.1 x 19.3 cms

*At the Pub (Man with Cigar, Soho),
1942*
Framed Vintage Gelatin Silver Print
22.8 x 18.7 cms

*London, Air Raid Shelters, East End
Underground Station, 1940*
Framed Oversized gelatin silver print
61.5 x 52.3 cms

Kurt Hutton

*4x Fair Game - Crime in the Nursery,
1935*
Framed Vintage Gelatin Silver Prints
12.7 x 18.9 cms

*Patrick O'Leary from "The Silver
Lady's Kitchen", 1938*
Framed Vintage Gelatin Silver Print
25.4 x 19.7 cms

*Dan O'Connor at "The Silver Lady's
Kitchen", 1938*
Framed Vintage Gelatin Silver Print
25.7 x 18.8 cms

*Daniel Sweeny at "The Silver Lady's
Kitchen", 1938*
Framed Vintage Gelatin Silver Print
25.6 x 18.7 cms

*Joe at "The Silver Lady's Kitchen",
1938*
Framed Vintage Gelatin Silver Print
25.3 x 18.9 cms

*The Picture of Our Time (Unemployed
Man), 1939*
Framed Vintage Gelatin Silver Print
30 x 21.2 cms

Ordinary Folk (Forty winks), 1943
Framed Vintage Gelatin Silver Print
23.5 x 19.7 cms

Markéta Luskačová

6 x selected works from the series
Photographs from the Beaches, 1978
Framed Gelatin Silver Prints
30.5 x 40.6 cms

2x selected works from the series
Spitalfields, 1975
Framed Vintage Gelatin Silver Prints
40.6 x 30.5 cms

Charlie Phillips

Street Cleaner, Kensal Road, North Kensington, 1965
Framed Vintage Gelatin Silver Print
18 x 23.7 cms

Tavistock Square, Notting Hill, 1965
Framed Vintage Gelatin Silver Print
18 x 23.9 cms

Notting Hill Carnival, Ledbury Road, 1966
Framed Vintage Gelatin Silver Print
33 x 18 cms

Notting Hill Couple - The sitters, Anita Santiago and Osmond (Gus) Philip, 1968
Framed Gelatin Silver Print
30.5 x 40.6 cms

Notting Hill Carnival, 1968
Framed Gelatin Silver Print
30.5 x 40.6 cms

Boy with candle, Tavistock Square, 1969
Framed Vintage Gelatin Silver Print
24 x 17.7 cms

Edith Tudor-Hart

Nanny, England
Framed Vintage Gelatin Silver Print
24.4 x 24.2 cms

Hospital Outpatients, 1934
Framed Oversized Vintage Gelatin Silver
29.7 x 36.2 cms

Girls moving 'softly', 1950
Framed Ferrotyped Vintage Gelatin Silver
Print
23.7 x 28.4 cms

Fountain Hospital, London, 1951
Framed Vintage Gelatin Silver Print
24.4 x 25 cms

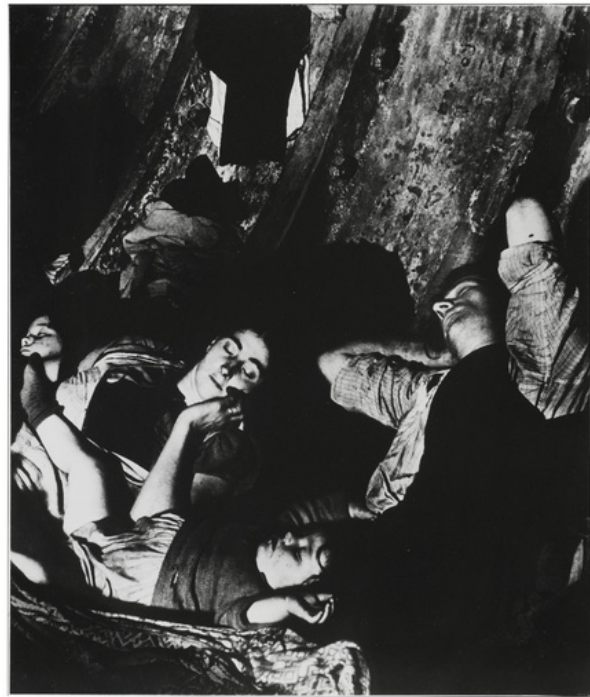
St. Christopher School for Children in need of Special Care, 1951
Vintage Gelatin Silver Print
28.5 x 23.7 cms

No Home No Dole London, c.1931
Framed Oversized Vintage Gelatin Silver
Print
34.4 x 25 cms

Thoroughfare, Aberdeen, c.1940
Framed Vintage Gelatin Silver Print
29.8 x 24.5 cms



BILL BRANDT



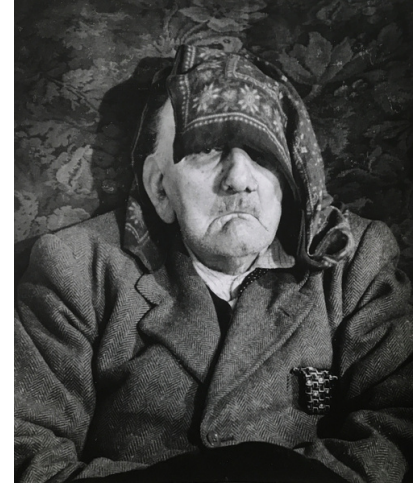
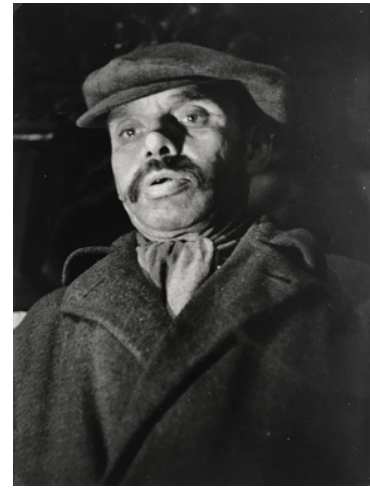
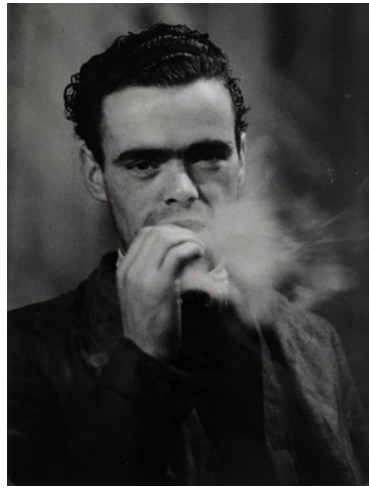
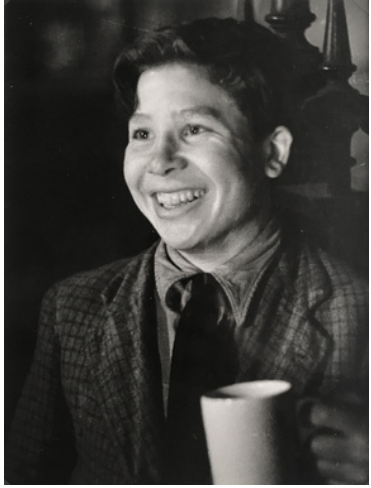
EDITH TUDOR-HART



CHARLIE PHILLIPS



KURT HUTTON



MARKÉTA LUSKACOVÁ



MARKÉTA LUSKACOVÁ

